

# Spotlight on Learning with Technology

January-February 2010

HAPPY★NEW★YEAR

## Spotlight on: January Website Links

### January is...

#### Winter

[Winter Lessons and Resources](#)  
[Winter Writing Prompts](#)  
[Winter Crafts & Activities](#)  
[Online Winter Crossword Puzzles](#)  
[A Blizzard of Winter Lessons](#)  
[Winter Lessons & Worksheets](#)

#### Martin Luther King, Jr.

[All About Martin Luther King Jr.](#)  
[MLK Reference Resources](#)  
[More Martin Luther King Day Activities](#)  
[The Power of Nonviolence \(Lesson for Gr. 6-8\)](#)  
[MLK Resource Page from Teacher Planet](#)

#### January is also...

[National Clean Up Your Computer Month](#)  
[National Oatmeal Month](#)  
[Celebrate the 100th Day of School](#)

#### February is also...

[Groundhog Day \(2nd\)](#)  
[American Heart Month](#)  
[Children's Dental Health Month](#)

### February is...

#### Black History Month

[Celebrate Black History](#)  
[The History Channel](#)  
[Teacher Resources](#)  
[Activities for Children](#)  
[Enchanted Learning](#)  
[Black History Scavenger Hunt](#)

#### Chinese New Year (Begins 2/14) (Year of the Tiger)

[Crafts & Activities for Chinese New Year](#)  
[All About Chinese New Year](#)  
[Chinese New Year Games and Activities](#)

#### Heroes

[What Makes a Hero? \(Gr. 3-5\)](#)  
[Lesson on Heroes \(Gr. 5-8\)](#)  
[Heroes Lesson \(Gr. 9-12\)](#)  
[Heroes Around Us \(Gr. 6-8\)](#)  
[Heroic Activities Celebrate Heroes](#)  
[Amazing Americans: A WebQuest](#)  
[Portrait of a Hero Lesson \(K-2\)](#)

Volume 4, Issue 3



Inside this issue:

Jan.-Feb. Web Links	1
Google Books-Magazines	1
DataDirector Quick Tip: <b>Using DataScanner</b>	2
Upcoming Technology Workshops	2

For information regarding this publication, please contact Mary White at:  
Mary.White@abcusd.k12.ca.us



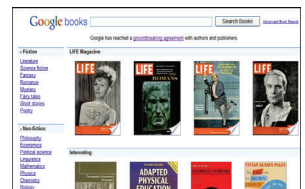
Check out additional activities for January and February:

- [Calendar of Events](#)

## Spotlight on: Google Books-Magazines



We all know Google is a great Web search engine, but did you know that it is also a search engine for books? The [Google Books](#) search engine allows you to search through hundreds of books and magazines. Google has partnered with university and public libraries around the world to include their collections in Book Search. For Library Project books that are still in copyright, the results are like a card catalog; you will see info about the book and, generally, a few snippets of text showing your search term in context. For Library Project books that are out of copyright, however, you can read and download the entire book. This could be a great tool for students doing research as it can pull up some pretty obscure magazines. Check out the old issues of Life magazine. I found them very informative.



## Spotlight on: DataDirector

### Using DataScanner

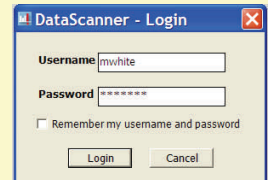
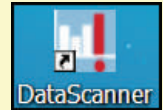
#### What is it?

DataScanner is the application used to scan student exam answer sheets. It is used only with exams available within DataDirector. You must print out the student answer sheets through DataDirector.

#### Where do I find it?

DataScanner software must be installed on the computer connected to the scanner. This computer must be a PC, or a MAC with Windows capabilities. You can log into DataScanner using your DataDirector Username and Password. You can only use any of the following scanners:

- Brother DCP 8060 Scanner/Printer
- Fujitsu fi-6130 scanner
- Fujitsu 5120C (no longer available for purchase)

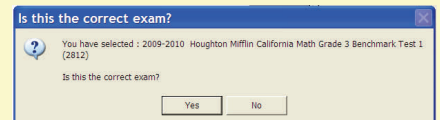


#### Why would I use it?

DataScanner is an excellent way to quickly get student results of exams into DataDirector. Once student answer sheets have been scanned you can immediately use the DataDirector Exam Reports to view the results.

#### Having Trouble Scanning?

- Before scanning, confirm that the answer sheets were printed using a laser printer and the correct paper size was used. Check out "[How to Print Answer Sheets](#)".
- In DataScanner confirm the correct exam has been selected. The exam ID is located at the lower left corner of each answer document. Make sure it matches the exam selected. Check out "[How to Scan Answer Sheets](#)".
- Always calibrate prior to scanning. The registration marks (sideways T's) located at the top and bottom of each answer sheet must be recognized by the scanner. They should be approximately 1/2" from the top and bottom edge and approx. 1/4" from the sides of the page. Check out "[How to Calibrate](#)".
- Check out "[DataScanner FAQ's](#)".



### Upcoming District Technology Workshops

(3:30—5:30; DO Tech Lab)

Jan. 12 & 19—PowerPoint

Jan. 21 & 28—Create a Weebly Website for your classroom

Feb. 4 & 11—Digital Storytelling

To register for these workshops, please email Lissette Reyes or call ext 21131

### Upcoming LACOE workshops

Jan. 13 - Inspiration (\$35)

Jan. 23 - ELL—Using Technology for Differentiated Instruction (\$35)

Jan. 24 - Web Design for Educators (\$35)

Jan. 27 - Google Docs for Educators (\$35)

Visit [LACOE](#) for details on these and other workshops